

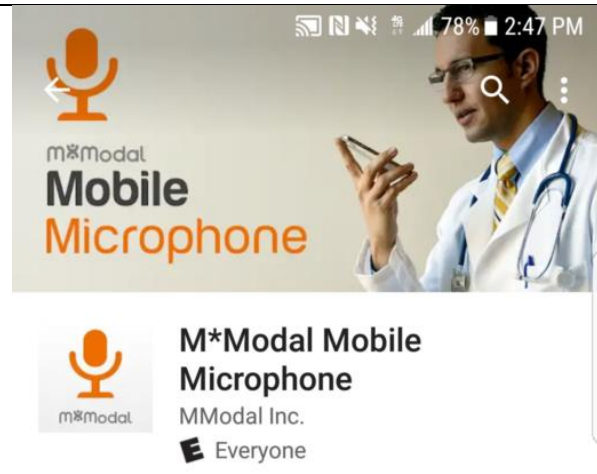


Mobile Microphone

The M*Modal **Fluency Direct™** Mobile Microphone is a mobile application that allows clinicians to dictate using the M*Modal Fluency Direct Desktop Application without the need for a physical microphone attached to the PC. Once the mobile application is paired one time with a M*Modal Fluency Direct User ID, the user of the application can dictate using M*Modal Fluency Direct running on any physical desktop or virtual device without a need for docking, Bluetooth or physical connections. The Application uses secure data transmission to stream audio from the mobile device directly to M*Modal Fluency Direct running elsewhere. It builds on the same cloud-based M*Modal Speech Understanding™ technology powering all M*Modal solutions, so existing clinician voice profiles can be used easily and instantly for optimal accuracy.

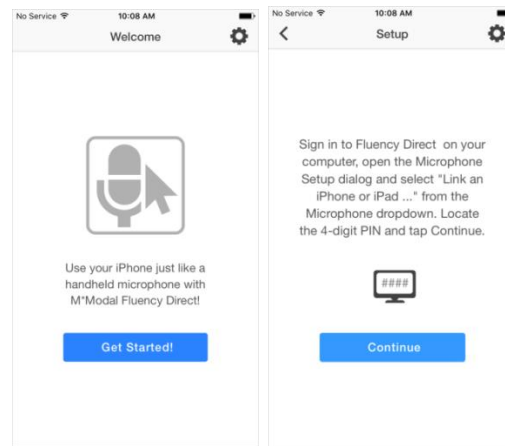
Requirements

- Fluency Direct 9.1 or higher. BRRH uses 10.0
- Requires iOS 9.0 or newer
- Android 4.4 or newer
- M*Modal Mobile Microphone app installed from the App/Play Store

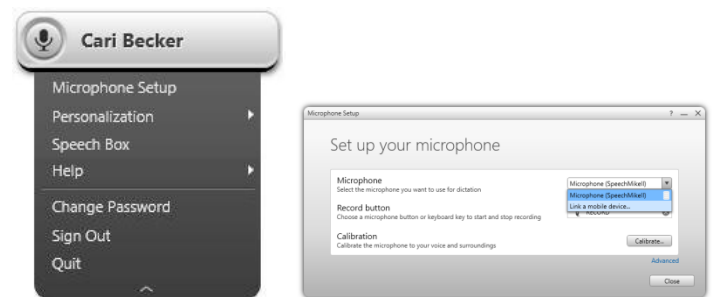


Linking a User ID to the Mobile Microphone App

After you have installed and opened the Fluency Direct Microphone app, you will see the Welcome screen. Click the Get Started link to begin. You will be prompted to sign into Fluency Direct on your desktop or laptop computer to connect the microphone.



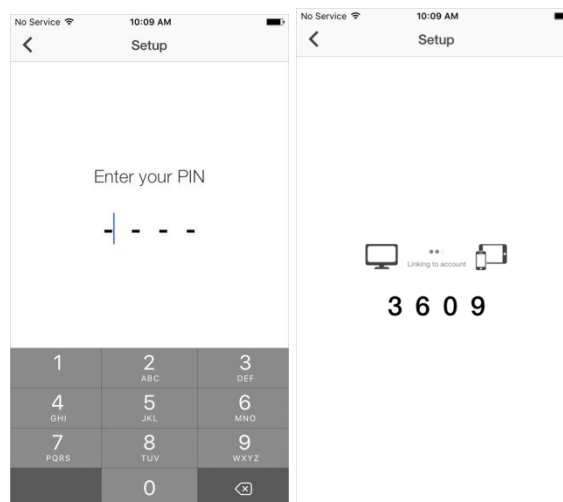
From Fluency Direct, On your PC or Laptop, select Microphone Setup from the Control Bar dropdown menu. From here select "Link a mobile device" from the Microphone dropdown menu.



Fluency Direct will present you with a 4-digit PIN. The entry of a PIN is a one-time linking process between your Fluency Direct User ID and your phone. Any time you load or switch to the Fluency Direct Mobile Microphone on your mobile device, the Mobile Microphone will be treated as a microphone source for the last instance of Fluency Direct logged into with your User ID.



Access the Fluency Direct Mobile Microphone app from your mobile device and enter the 4-digit PIN. Fluency Direct will connect with your mobile device.



Multiple Devices

If you have more than one smart phone or perhaps a phone and a tablet, it is possible to link multiple devices (multiple "mobile microphones" via the FD Mobile Mic app) to one Fluency Direct user. The mobile device can only be linked to one Fluency Direct user at a time. See below on how to unlink a Fluency Direct user from the app.

Recording Mode

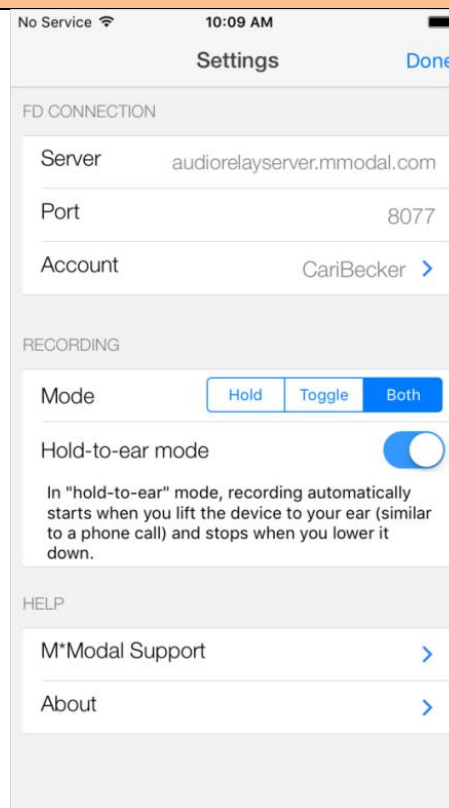
There are multiple dictation modes that you can use. Click on the Settings icon and select the Recording Mode desired.

Hold: This recording mode allows you to press and hold the microphone while recording. Releasing the microphone will end the recording session.

Toggle: This mode allows you to tap the microphone to begin recording and tap it again to end the recording session.

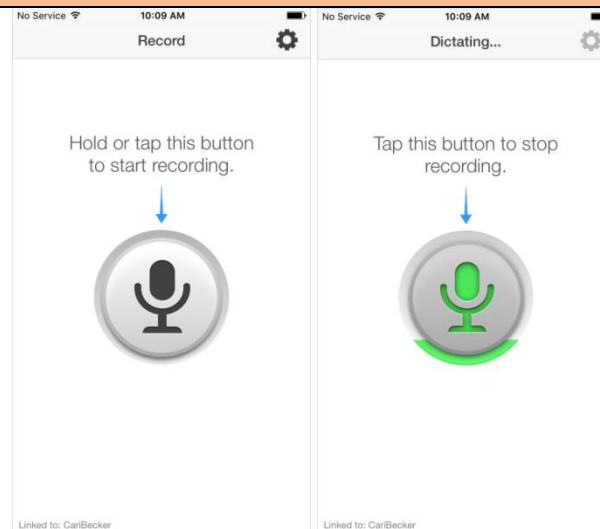
Both: Selecting both allows you to use either Hold or Toggle as desired.

Hold to Ear: When this option is turned on, you can simply lift the phone to your ear and begin talking, as if you were making a phone call. The recording session is activated when you raise the phone and will end when you lower the phone.



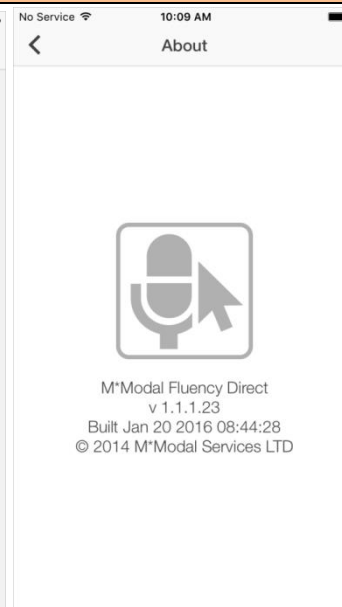
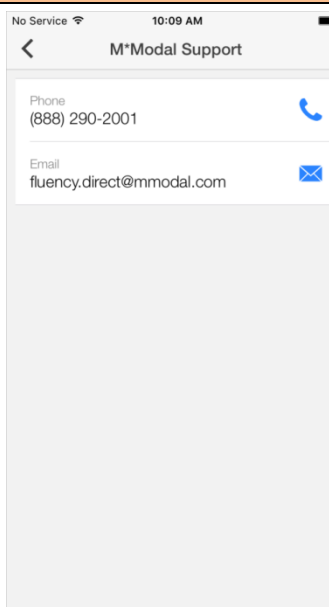
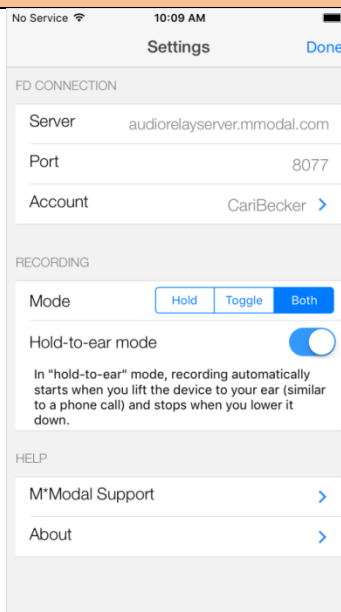
Microphone

The microphone indicator will display in green when you are dictating. Your speaking volume will be displayed in the outer circle and will adjust according to how loud you are speaking.



Settings

The Settings can be accessed from the cog-like icon in the upper right of the home screen. From here, you can view your FD Connection, change your recording mode, or access Support. The Support screen allows you to call or email M*Modal Support directly.



Unlinking a User ID from the Mobile Microphone

You can unlink your mobile device from a User ID by accessing the Settings (cog icon) on the home screen and selecting Account. The following screen will appear. From here you can click the **Unlink This Account** button and your Mobile Microphone will be disconnected from Fluency Direct.

